



The opportunities for Community Carbon Saving in Llandrindod Wells

Cymru Effeithlon
Resource Efficient Wales

0300 123 2020

Arbed ynni, gwastraff a dŵr | Saving on energy, waste and water





Tonight

- Possible new projects
- Expand existing projects
- Organisations to link to

45 mins

- Discussion and vote on options

40 mins



My role

Produce a report on three opportunities suited for the group. The report unlocks Welsh Government assistance:

- Training
- Technical assistance
- Specialist support

Ultimately my objective is to reduce
carbon dioxide emissions





Topics in the report

1. Repair cafe
2. Love Food Hate Waste
3. Zero waste events
4. Love your clothes
5. Waste audits
6. Recycling
7. Water efficiency
8. Carbon footprints
9. Thermal imaging survey
10. Renewable energy generation

Doesn't matter which
you pick.
It does matter how you
run them.

Repair cafe

Objectives: Repair items, upskill people, reduce waste sent to landfill

Current

- Once a month
- Fixing electrical, jewellery, furniture, woodwork etc
- PAT testing
- Sharpens garden and household items
- Raffle of upcycled furniture



Repair Cafe Options

Nothing left to fix

Pre collected items for people to repair

- Council electrical bins
- Fly tipped items

“How to” workshops/demonstrations

- Wire a plug
- Thread a needle
- Fix a bike puncture
- Oil a bike chain
 - Darn a sock
- Use a soldering iron
 - Use a drill (safely)
 - Sew on a button
- Change a car tyre or check car fluids

Partner organisations

- Council- recycling stand
- Other repair cafes
- Local garage-car repair
 - Care and Repair

Multi skilled fixers

Training
provided for
public and
volunteers

Repair Cafe Options

Publicity

- Advertise a two month marketing position
- Survey demographic of repair café clients
- Provide details to national Repair Café website and visit Wales events page



Seasonality or themed events

- Christmas, National Recycle week
- Repair competition



Pre collection of broken items

- Permanent location to drop off broken items
- Opportunity to then sell/win repaired items

Trade

- Graham's second hand furniture
- Phoenix (reuse furniture organisation, Newtown)
- Other retailers who have broken stock

Need storage space?

- Business rates apply after three months of a property being empty
- Charities can get rent free space, in exchange for reducing the business rate by 80%
- One week's notice period



Love Food Hate Waste

Objectives: Reduce food waste, encourage portion control and inventive cooking

Current

- Herbs for Beginners, May 2014
- Food and beer festival, May 2015



Love Food Hate Waste Options

Online support

- Recipes packs
- Storage info
- Portion recommendations
- Money saving tips

Spread the word

- Free cascade training is available from LFHW

Food Event

- How to use leftovers
- Link with the Food Bank and Council
- “Best before” food provided by supermarkets



Cooking demonstration



What you need

Celebrity chief
Large stage
Full kitchen

The leftover menu



Baked egg in peppers



Carrot and rice soup

What you need

Table
Friendly chief
Supply of “dodgy food”

Zero Waste Event

Objectives : Divert waste from landfill, increase recycling, raise awareness

Current

- A wide variety of materials are recyclable at home
- **Non Recyclable** (at home or at recycling centres)
- Stretchy plastic-carrier bags
- Magazine wrappers
- Bubble wrap
- Polystyrene



Zero Waste Event

Potential income source

- Selling donated paint
- Or donation only

Paint reuse

- Collect unneeded paint
- Hand out to the community as needed
- Support available from national group-Community repaint
- Volunteering/training opportunities



Welsh Minister for Natural Resources, Carl Sargeant at Aberystwyth RePaint Scheme, July 2015

Opportunity

- Closest paint disposal site is Newton
- Collect paint from HWRC sites then reprocess it

Paint Bring Banks

Located in Cambridgeshire, Warwickshire, Nottinghamshire, Bristol etc

In coordination with the Council you collect paint from recycling centre bring banks and pass it back to community.



Reuse Christmas trees

Christmas trees can be recycled but reuse is better



- Mulch
- Drinks coasters
- Plant it
- Donate it



Linton Zoo in Cambridgeshire



Christmas trees are "like catnip" to lions. Kim Simmons, *Director Linton Zoological Gardens* Jan 2015

Thermal imaging surveys

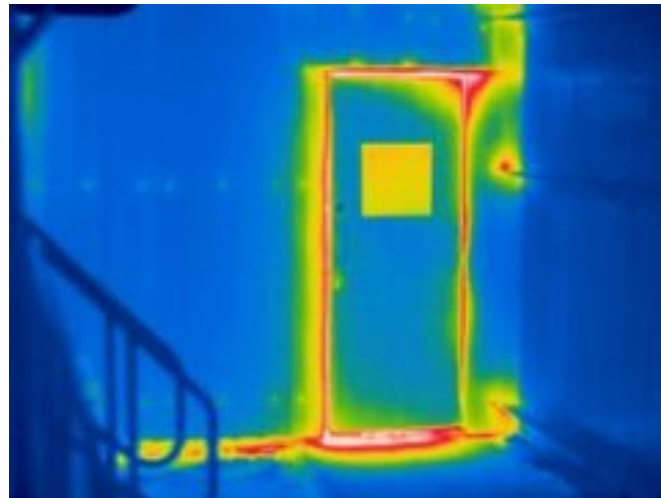


Requirements

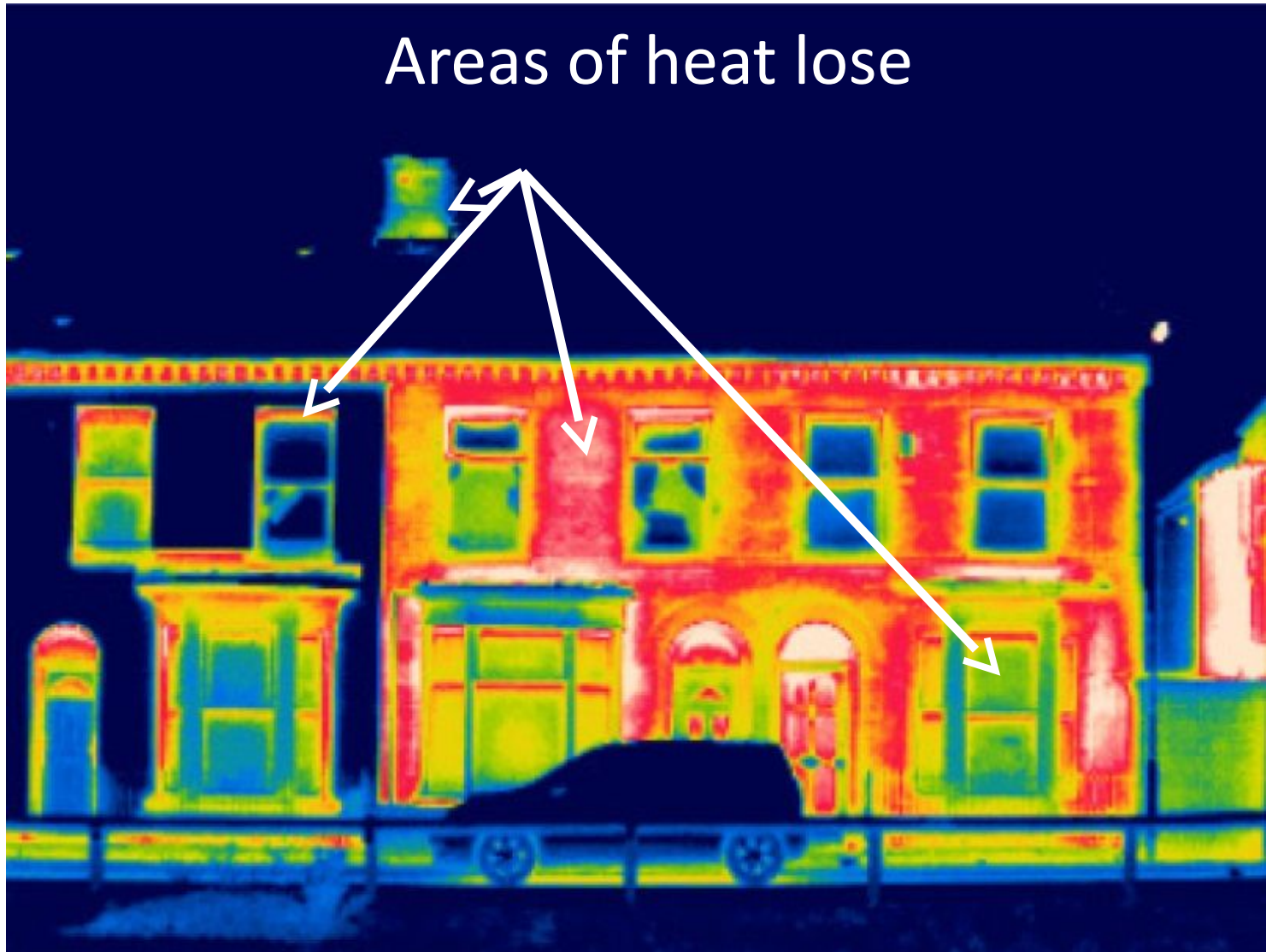
- A temperature difference of 10°C
 - Still air
 - No rain
- No surface water

Not just a photo

- Supply helpful information on how to install low cost insulation measures
- Easy behavioural changes
 - REW advice line



Thermal imaging surveys



Renewable Energy Generation



Solar Farm, Westbury, Wiltshire



Carno Wind Farm, Powys



A hydropower plant in Monmouthshire



Solar road in the Netherlands

Renewable Energy Generation

Concentrated Solar Power, Spain



All about that is the most appropriate technology for a given situation and area

Deciding factors

- Planning permission
- Capacity, skills and experience within a community groups
- **Grid connection**
- Financial/carbon savings
- Ecological survey



Group Discussion then Vote as a Group

1. Repair cafe
2. Love Food Hate Waste
3. Zero waste events
4. Love your clothes
5. Waste audits
6. Recycling
7. Water efficiency
8. Carbon footprints
9. Thermal imaging survey
10. Renewable energy generation